

microcement

---

Jointless Works Limited

Manufacturing since 1940

# ONE OF THE MOST ESTABLISHED COMPANIES IN THE COUNTRY



Transcending is our goal. To go beyond. That is what we seek with the creation of Cemher.

Our experience (backed by the Kilnher Group) allows us to relaunch microcement from another dimension.

Until now, microcement has been a decorative coating plagued by technical problems and doubts about its application. It acquired a bad reputation caused by lack of knowledge and poor technical advice from some inexperienced companies.

With the arrival of Cemher, a microcement of superior quality resurfaces and with it, a technical substrate that provides the necessary solutions to possible unforeseen events. We have made an effort to solve all the technical problems that have arisen in the past and that have overshadowed this appreciated coating.

CEMHER is a reality thanks to our experience in the chemical sector and the experience gained over the years as manufacturers and suppliers for other microcement companies that commercialize it under their own brand. We consider this one of our added values, since our experience is superior to that of other companies in the sector.

This background and trajectory allow us to launch innovative products to the market that our competitors cannot offer. Improvement and innovative spirit are two of the components of our essence that best define us.

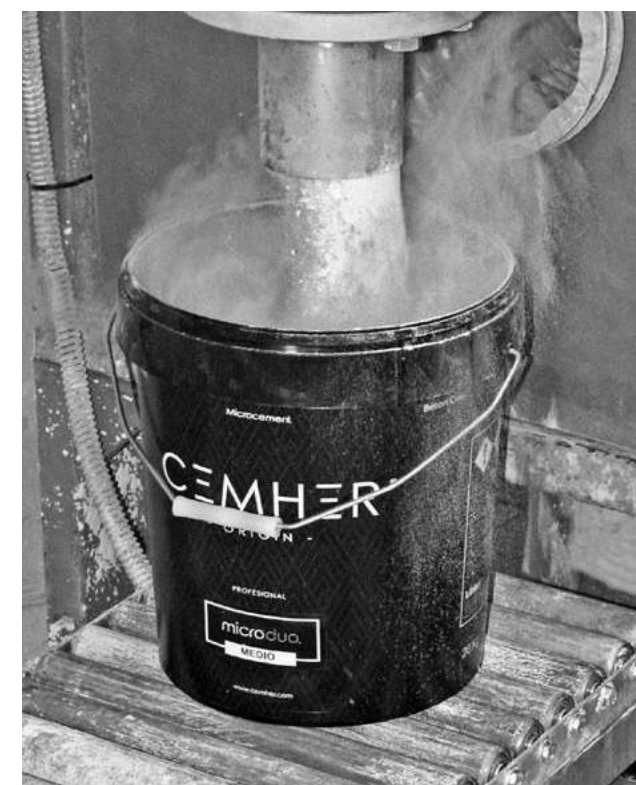
From here, our brand claim was born:

## “Origin”

Origen: from lat. origo, -inis.  
Principle, birth, source, root and cause of something.

Cemher is just that, the beginning. The origin of microcement manufacturers. In turn, microcement is the origin of a space that has yet to be created. All it takes is four empty walls and the microcement will transform that inert place into a space with soul.

Microcement is also the origin of your project. Bet on it and transcend its dimension.



From Cemher, as expert manufacturers of microcement, we advise professionals and private customers who are interested in this material, to be informed and be aware of the quality of the material to be purchased. A timely choice of the manufacturer is essential to achieve the expected final result.



Microcement is a decorative coating composed of a cementitious base mixed with polymers, fibers, resins, aerators, ultrafine aggregates and mineral pigments; it does not require expansion joints and has a thickness of 1 to 3 mm. This material is ideal for covering walls and floors without the need to remove the existing material.

- Ideal for modern and minimalist environments.
- Applicable on all types of surfaces: walls, floors, furniture, swimming pools.
- Continuous flooring (no joints required).
- Diversity of colours.
- Different finishes and textures.
- High resistance.
- Easy maintenance.

Microcement features:



Elasticity  
and  
flexibility



Fits any  
shape or  
geometry



Durable  
and  
robust



Adherence on  
all types of  
substrate



Continuous



Fire-  
retardant



UV-  
resistant



Stain-  
resistant



Excellent  
chemical and  
mechanical  
resistance

Suitable for:



Furniture



Radiant  
floor  
heating



Indoors  
Outdoors

microdur®

# - THE TRUST -

## SINGLE-COMPONENT MICROCEMENT

The Microdur line of microcement is characterized by being a single-component coating. It only needs to be mixed with water for hardening, which makes it simpler to apply.

Microdur allows you to achieve a very high thicknesses without the risk of cracking, thanks to its high hardening. With a large amount of product, it is possible to get different textures and even cast shapes and forms with molds.

This line is also characterized by being the only one that allows textured coatings, such as, for example, the famous concrete formwork effect.



2 h of product's pot life



Stucco effect

40 MPa

Compressive strength

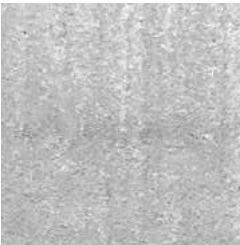
1 Component

Water + Powder

## GRANULOMETRIES



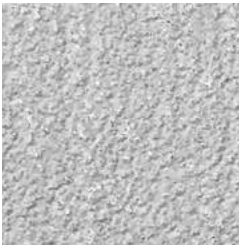
Fine



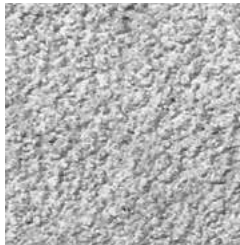
Medium



Fine Base



Base



Thick Base



microröck®

## - THE STRENGTH -

DUAL-COMPONENT MICROCEMENT

The Microröck microcement line is characterized by being bicomponent and waterproof. It's a product of incomparable characteristics until now, as it is a microcement whose hardness is superior to that of polished cement with a mineral appearance. In addition, its compressive and tensile strength is unmatched. Thanks to this, sealants do not soften the product and the microcement is not affected by solvents or chemical compounds.

Thanks to its impermeability, it is not necessary to apply several coats of pore sealer to protect it. A couple of coats of varnish is sufficient to prevent dust and stains.

38 Microröck surfaces do not fissure or crack and do not stain. It has a high adherence to any substrate and specially designed to be applied in high traffic areas.

### MICRORÖCK'S CHARACTERISTICS



Waterproof



2 Versions:  
Continuous effect  
Stucco effect

80 MPa

Compressive strength

2 Components

Ready-to-use + hardener

### GRANULOMETRIES



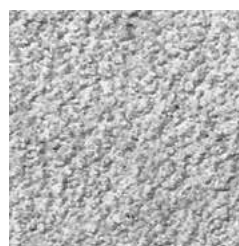
Fine



Medium



Base



Thick Base

microne®

## - THE SIMPLICITY -

2 IN 1 - READY TO USE OR DUAL-COMPONENT MICROCEMENT

The new formula of the Microne microcement line, based on polyurethane, is characterized by being the most versatile line: it is 2 products in 1. Microne can be a 'ready-to-use' microcement with a hardness of 27 Mpa, or a 'bicomponent' microcement if we add component B (Catalyst), thus increasing its hardness to 65 Mpa.

Microne 'Bi-component' allows its application on high traffic floors, with an excellent result. Microne 'ready-to-use' is waterproof in mass, but by adding the catalyst we increase its waterproofing even more.

In both versions, just add the color and shake. Thanks to its high impermeability it is not necessary to apply several coats of pore-sealer to protect it; two coats of varnish are enough to avoid dust and stains. In addition, the possible marks of the roller and those produced by the absorption of the surface are avoided. The time of execution/application decreases considerably by not requiring extra coats of pore-sealer, or waiting time between coats. It is ideal for humid places such as bathrooms, shower trays, saunas or exteriors since it does not darken when in contact with water. It has a great adhesion on different substrates and very good resistance to wear. Easy workability and application. It is not suitable for swimming pools or surfaces in continuous immersion.



Waterproof



2 Versions:  
Continuous effect  
Stucco effect

27-65 MPa

Compressive strength

2 Versions

Ready-to-use

### GRANULOMETRIES



Fine



Medium



Base

MICRONE - MICROCEMENT 2 IN 1 - READY TO USE OR DUAL COMPONENT

The new formula of the **Microne®** microcement line, based on polyurethane, is characterized by being the most versatile line, as it consists of two possible products in one.

Microne® can be a 'ready-to-use' microcement with a hardness of 27 Mpa, or a 'dual component' microcement if we add component B (Catalyst), thus increasing its hardness to 50 Mpa.

Microne® 'Bi-component' allows its application on high traffic floors, with an excellent result. Microne® 'ready to use' allows its application on walls with many structural cracks, it has an incredible elasticity. It

Microne® is suitable for the realization of:

- Highly decorative continuous coatings for interior and exterior floors, walls and ceilings.
- Coating of furniture, shelves, kitchen countertops, counters, etc..
- Not suitable for swimming pools or continuously immersed surfaces.
- Covering of old ceramic tile surfaces.
- Ideal for humid areas such as bathrooms, shower trays or exteriors since it does not darken due to water.
- Application on interior or exterior pedestrian pavements on cementitious substrates.

is waterproof in bulk, but by adding the hardener we increase its impermeability even more. For both versions just add the color and stir.

Thanks to its high impermeability it is not necessary to apply several coats of pore sealer, with two coats of varnish is enough to avoid dust and stains. Besides, it also helps to avoid the possible marks of the roller and those produced by the irregular absorption of the surface. The time of execution of work decreases considerably by not requiring layers of pore sealer or additional coats of varnish.

- Decorative coating for stores, offices, lobbies, exhibition areas, homes, etc.
- Continuous coating 2 in 1. You can choose a great flexibility for walls or a great hardness for floors.
- Applicable on almost any type of surface: concrete, cement mortars, ceramics, gypsum, plasterboard, etc.
- Excellent workability and application.
- Impermeability in mass.
- Non-yellowing.
- Applicable in interiors and exteriors.

TECHNICAL DATASHEET  
Microne / Microne Plus

Microne® Fine  
Microne® Medium  
Microne® Base  
Microne® Plus Fine  
Microne® Plus Medium  
Microne® Plus Base















AQUAPUR 70 - COLORLESS WATER-BASED RESIN VARNISH

**Aquapur 70®** Colorless varnish formulated with water-based resins for an exceptionally hard finish and excellent water resistance.

It is the only water-based polyurethane with maximum durability and high solids content (65%, more than other water-based polyurethanes) - special characteristics that provide unmatched resistance to stains, both chemical and those produced by traffic and household pollutants that are difficult to clean on other polyurethane coatings.

Moreover, the high solids content ensures superior waterproofing, sealing absorbent substrates with greater efficiency and enhancing the water resistance of all types of surfaces. The increased ratio of hardener (40%) to component A provides exceptional hardness without reducing the working time with the mixture: more than 2 hours of pot-life.

AQUAPUR 70 TECHNICAL SPECIFICATIONS

	STANDARD	RESULT
 <b>Determination of emissions into indoor air</b> UNE EN 16516:2018	UNI EN ISO 16000-6:2019	A+
 <b>Thermal compatibility (Freeze and thaw cycling)</b> UNE EN 1504-2:2 2005	UNI EN 13687-5	>3,5 MPa No bubbles, cracks
 <b>Artificial weathering</b> UNE EN 1504-2:2 2005	UNI EN ISO 16474-1:2014	Without change 2000 h
 <b>Adhesion Strength by pull-off test</b> UNE EN 1504-2:2 2005	UNI EN 1542	4,5 MPa
 <b>Impact resistance</b> UNE EN 13813:2014	UNI EN 6272-2:2012	Class III
 <b>Shore Hardness</b> UNE EN 1504-2:2 2005	UNI EN ISO -868	80 D
 <b>UV Resistance rays (PU Alifatic)</b> UNE EN 1504-2:2 2005	UNI EN ISO 1134	ΔL=-1,9; ΔE=2,8 (200 Cycles)
 <b>Determination of abrasion resistance Taber-CS17 / 1000g:1000rpm</b> UNE EN 1504-2:2 2005	UNI EN 5470-2	Thick (100 μ) Loss (22 mg)
 <b>Cooling Cycles resistance</b> UNE EN 1504-2:2 2005	UNI EN 48025:1979	Pass 20
 <b>Permeability to liquid water</b> UNE EN 1504:2005	UNE EN ISO 1062-3:2008	W<0.1 Kg / (Kg./m²*h <sup>0.5</sup> )
 <b>Resistance to severe chemical attack</b> UNE EN 1504:2005	UNI EN 13529:2005	Class: III No alteration and no reduction in hardness.
 <b>Determination of the transmission properties of water vapors</b> UNE EN 1504:2005	UNE EN ISO 7783-2:2012	Clase: 1 Sd<5 m No alteration and no reduction in hardness.

HOUSEHOLD RESISTANCES (ASTM D 1308 TOP COVERED)

Time	Ketchup	Coffee	Water	Mustard	Caustic soda	10% Bleach	24% Salfuman
1 hour	Not affected	Not affected	Not affected	Not affected	Not affected	Not affected	Not affected
4 hours	Not affected	Not affected	Not affected	Slight change	Not affected	Not affected	Not affected
24 hours	Not affected	Not affected	Not affected	Slight change without loss of hardness	Not affected	Not affected	Not affected

CHEMICAL PHYSICAL CHARACTERISTICS PERSOZ HARDNESS (20º)













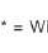
Product	24 hours	48 hours	7 days	30 days	Total
Aquapur 70®	120"	260"	300"	370"	370"

TECHNICAL DATASHEET  
Aquapur 70

Aquapur 70® Comp A  
Aquapur 70® Comp B



MICRONE PLUS TECHNICAL SPECIFICATIONS

	STANDARD	RESULT
 <b>Determination of emissions into indoor air</b> UNE EN 16516:2018	UNI EN ISO 16000-6:2019	A+
 <b>Thermal conductivity</b>	UNI EN 12664:2002	λ=1,24 (W/mK)
 <b>Reaction to fire classification 1*</b> UNE EN 13501-1:2019	UNI EN 13501-1:2019	Class B Class B <sub>FL</sub>
 <b>Determination of adhesion strength</b> UNE EN 13813:2014	UNI EN 13892-8:2003	>5 N\mm² Class B 5,0
 <b>Impact resistance</b> UNE EN 13813:2014	UNI EN 6272-2:2012	>20 Nm IR 20
 <b>Determination of the surface hardness 1*</b> UNE EN 13813:2014	UNI EN 13892-6:2003	>180 N/mm² (SH 180)
 <b>Determination of compressive strength</b> UNE EN 13813:2014	UNI EN 13892-2:2005	>50 N\mm² Class C50
 <b>Determination of abrasion resistance BCA 1*</b> UNE EN 13813:2014	UNI EN 13892-4:2003	Class: AR 0,5 (max 50 μm)
 <b>Depth of water penetration under pressure 1*</b> UNE EN 14891:2017	UNI EN 12390-8:2020	5 bares – 3 days Direct pressure: No penetration Indirect pressure: No humidity
 <b>Determination of slip resistance</b> Technical building code	UNE EN 12633:2003	Value (USRV): 41 Class 2
 <b>Permeability to liquid water</b> UNE EN 1504:2005	UNE EN ISO 1062-3:2008	<0.1kg / (m²*h <sup>0.5</sup> )
 <b>Resistance to severe chemical attack</b> UNE EN 1504:2005	UNI EN 13529:2005	Class: II 28 Days without pressure
 <b>Determination of the transmission properties of water vapors</b> UNE EN 1504:2005	UNE EN ISO 7783-2:2012	Class: 1 Sd<5 m For applications such as those described in the data sheet

1\* = Without sealer



# MICROCEMENT

Microcement is a decorative coating that replicates the natural beauty of stone. This versatile material offers a unique sensory experience unmatched by any other surface. Its adaptability elevates the aesthetics of both floors and walls, whether indoors or outdoors, making it ideal for kitchens, showers, swimming pools, and an endless variety of environments. Mortars add a touch of natural elegance and exclusivity to every space it enhances.



## MICRODUR

Monocomponent microcement (**cement + water**) with a mineral appearance. It simplifies mixing, preparation, possible application errors and even transport and storage costs. It is characterized by obtaining very high thicknesses without the risk of cracking.

Technical data sheet  
Ficha técnica



## MICROFLEX

Bicomponent semi-permeable microcement (**cement + resin**). It is characterized above all by its great flexibility. Ideal for buildings or constructions with some structural movement. Suitable for application on any area with predisposition to the appearance of fissures. It can be applied both indoors and outdoors.

Technical data sheet  
Ficha técnica



## MICROPOOL

Epoxy microcement (**paste + epoxy hardener**). Waterproof in mass. Designed for swimming pools and spaces in permanent contact with water. The difference with Microrock is an additive that allows leaving micro holes for water to pass through them and thus avoid blistering or the appearance of blisters due to lack of permeability.

Technical data sheet  
Ficha técnica



## MICRONE

Microcement based on polyurethane, is waterproof in mass. It can be used as **‘ready to use’** with a hardness of 27 Mpa, or a **‘bicomponent’** increasing its hardness to 40 Mpa. This line allows to reduce the stucco effect maintaining the texture of the microcement. Not suitable for swimming pools or surfaces in constant immersion.



## MICRORÖCK

Epoxy microcement (**paste + epoxy hardener**). Waterproof in mass. Designed for application in areas of high transit and high humidity. It stands out for its resistance to compression (80 MPa), to traction, to chemical components and has a high adherence to any surface.



## CLAYWASH

Monocomponent decorative paint (**clay + water**). Very mineral appearance, creates a soft variation in color which adds depth and texture. it is characterized by its easy application for home or professional use.



# PREPARATION

Preparation is the key to achieve a perfect finishing of your projects. Our wide range of products offers you the ideal solution to prepare any surface before applying mortars or other coatings. Each product is designed to meet the specific needs of each type of surface. With preparation products, quality starts at the base.



## PRIMER 100

Bonding primer for mortars, plasters and microcement on porous and non-porous substrates.

TDS / FT



## PRIMER GRIP

Ready-to-use aggregate bonding primer that facilitates anchoring and allows the creation of rough surfaces. Perfect for porous and non-porous surfaces.



## EPOXY BV

100% solids anti-humidity epoxy primer, ideal as a vapor barrier or against capillary humidity. It has a very high adherence to an infinity of substrates. Perfect to avoid the tracing of joints.

TDS / FT



## HYDROPRIMER

High solids acrylic sealer primer. It consolidates, waterproofs and prevents the wetting effect of solvent-based varnishes.

TDS / FT



# MAINTENANCE

In Cemher we offer a complete range of products for the protection and care of all types of surfaces. We have the perfect solution to maintain your surfaces impeccable. High quality products that prolong the life of your surfaces and keep them always immaculate.



## FLOOR PROTECT

Varnish renovator. Waterproofs, revives and protects previously varnished surfaces. It does not contain waxes, so it does not scratch with footsteps and does not disappear in a short period of time.

# SEALANTS

Sealers are a wide range of products to protect your surfaces durably against humidity, erosion and external agents. We have the perfect sealer for every need, both indoors and outdoors. Impeccable finishes, guaranteed protection.



## AQUATIX ROLLER

Single component water based polyurethane resin. High viscosity and solids. It has several uses. 1st As a varnish for satin and matte walls. 2nd As a sealer that provides a great hardness, waterproofs and acts as a prevention of the wet effect of solvent-based varnishes. 3rd As a water-based paint for floors or walls, adding a water-based color toner. 4th As a brightness enhancer when polishing metalresin products.

TDS / FT



## AQUAMAX PRO

Bicomponent water based poly- urethane varnish, odorless. High resistance to chemical agents, abrasion and scratches. Does not yellow under the action of sunlight.

TDS / FT



## AQUAPUR 70

Bicomponent water based polyurethane varnish, odorless. The best varnish of CEMHER. More information in Technical Data Sheet.

TDS / FT



## MAXIPUR 25%

Bicomponent solvent polyurethane varnish. Characteristics: High filling capacity and moderate resistance.

TDS / FT



## POLYSHIELD

Varnish for floors with a high solids content. It can be applied with a trowel with only one coat to create a film of great thickness, chemical resistance and very high hardness.

TDS / FT







# TOOLS

Cemher offers you a wide range of manual and electric tools for the application of our products. We have everything you need to work quickly, comfortably and efficiently. High quality materials that guarantee a perfect finish.



BIFLEX TROWEL

Professional trowel made of flexible, corrosion-resistant and easy to clean stainless steel, ideal for coarse granulometries or large thicknesses.

TDS / FT



METAL TROWEL WOOD HNDL.

Stucco trowel and very fine granulometries, made of stainless steel. Wooden handle and ABS shank. Ideal for applying and smoothing mortars with precision and comfort.

TDS / FT



METAL TROWEL PLASTIC HNDL.  
LLANA METÁLICA MNG. PLAST.

Multipurpose stainless steel trowel with ergonomic handle. Ideal for smoothing fillers and coatings on vertical and horizontal surfaces.

TDS / FT



RUBBER TROWEL

Flexible rubber trowel for perfect finishes on curved and irregular surfaces.

TDS / FT



# Color

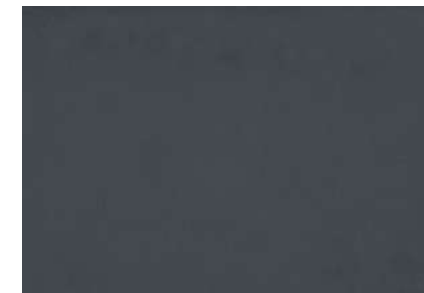
24 standard coloured for microcement systems. Tailor-Made Colours upon request



Mountain



Cement



Pizarra



Topo



Amazonia



Militaire



Branco



Bone



Terra



Cream



Latte



Coffee



Perla



Magnetic



Dark



Fossile



Mojave



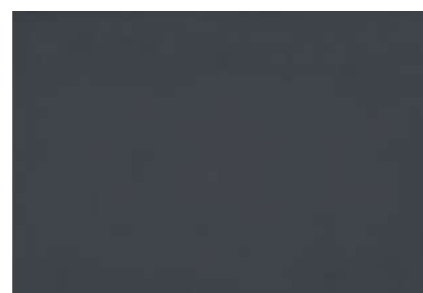
Africa



Hakuba



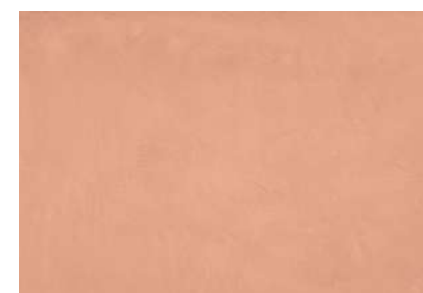
Xenon Grey



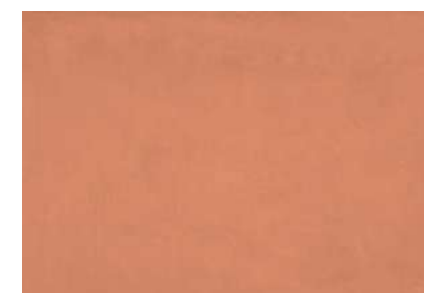
Onyx



Golden Sand

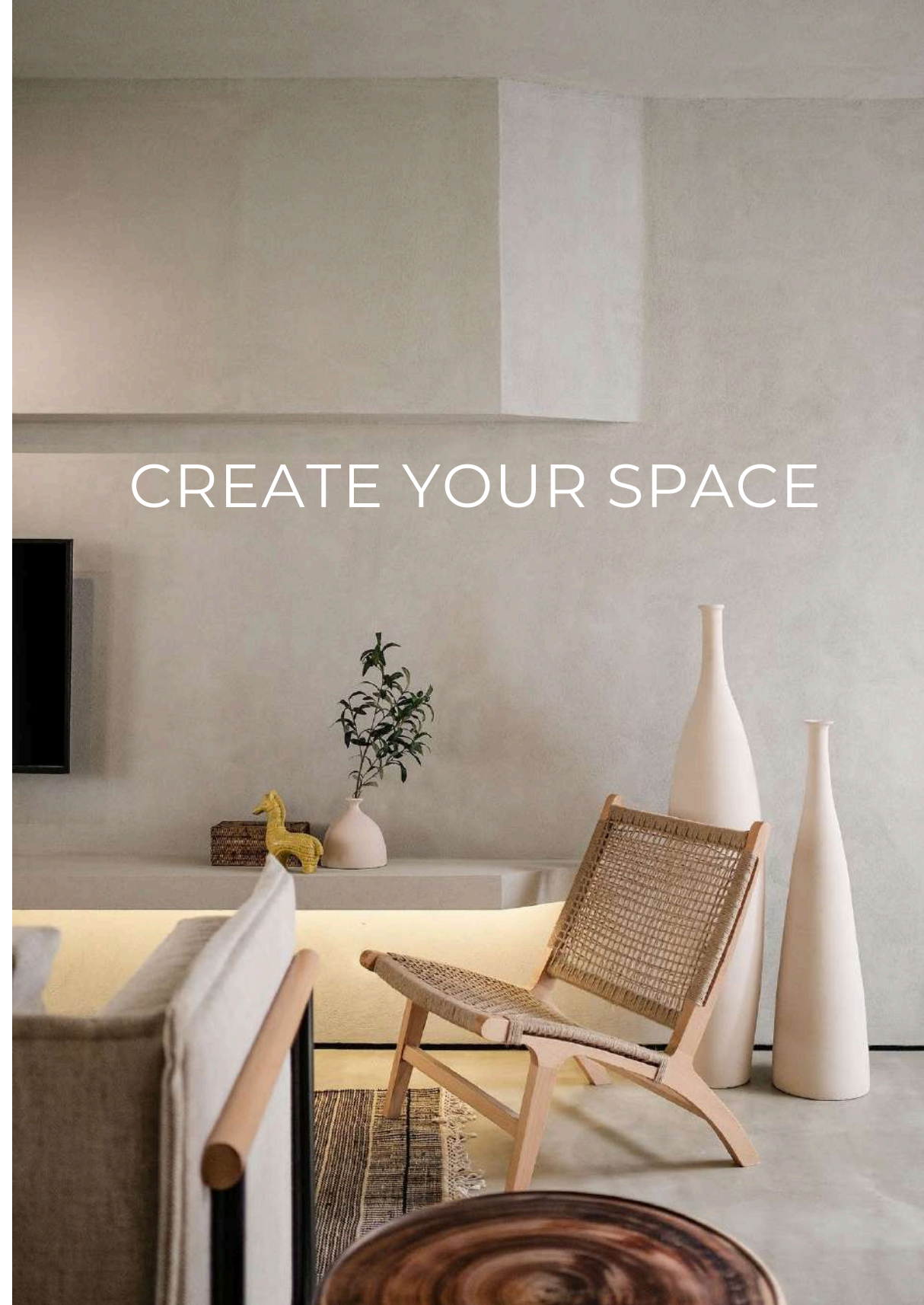


Reef



Terracota





Guide of use

## ONE NEED, DIFFERENT SOLUTIONS

Everything you need to know before starting your project with Cemher®. Our microcement collections highlight the desire to create spaces with soul that stand out from the rest.

## COLLECTION

We have created 2 very different collections Which one is yours?

### STUCCO COLLECTION

Its natural beauty is only comparable to that of the landscapes that inspire it. The visual richness of its nuances makes it the ideal collection for those spaces that require a warm and comfortable atmosphere.

Its finish will remind you of natural stone / cement. This collection is executed in the image and likeness of the original nature.

**Welcome to warm minimalism!**



### CONTINUOUS COLLECTION

The peculiarities of this collection reflect an industrial aesthetic, but not an aseptic one. A more neutral air when compared to the stucco collection. Able to create minimalist environments where simplicity and neutrality prevail. This collection is inspired by absolute purity.

**The traditional minimalism!**



**SUBTLE  
CONTINUOUS**

Gloss Type: Matt  
Color: Bone & Dark

Bone: Homogeneous finish, without stucco effect (No cloudy effect).

Dark: Slight stucco effect, is much more subtle than that of the traditional finish.



**SUBTLE  
CONTINUOUS**

Gloss Type: Matt  
Color: Bone



Homogeneous finish, without stucco effect (No cloudy effect)



## SUBTLE CONTINUOUS

Gloss Type: Matt  
Color: Terra

Homogeneous finish, without  
stucco effect (No cloudy effect).



## SUBTLE CONTINUOUS

Homogeneous finish, without  
stucco effect (No cloudy effect)

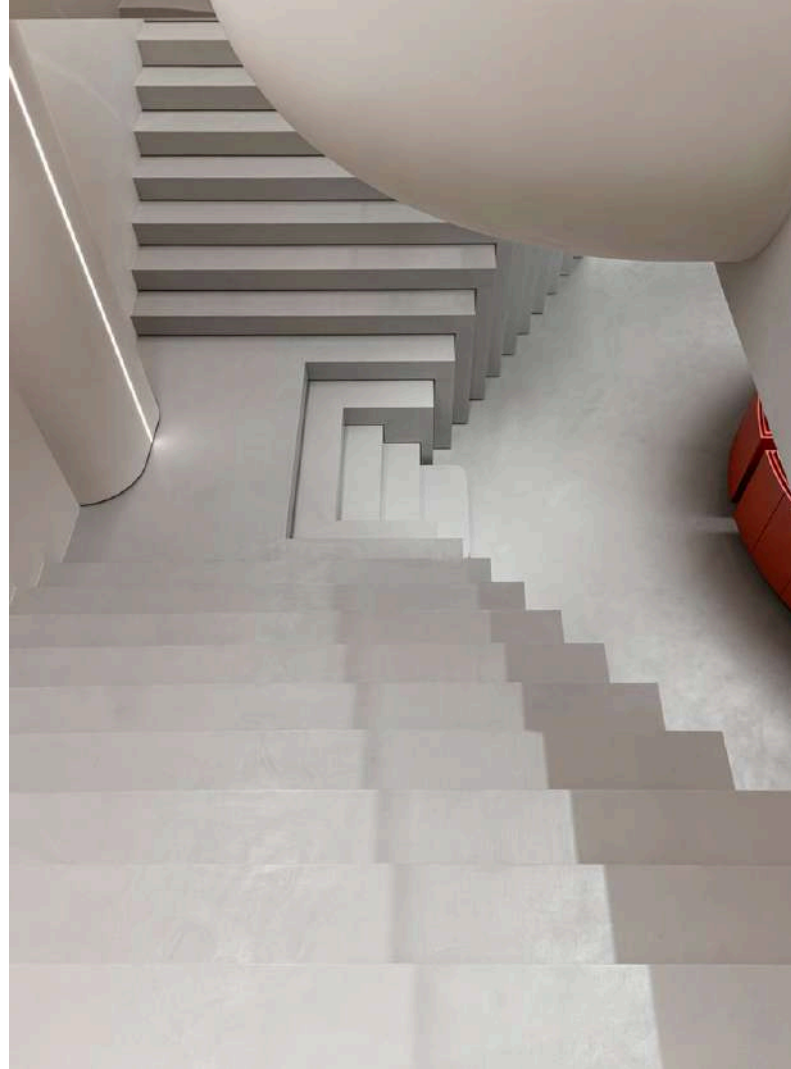
Gloss Type: Shiny Matt  
Color: Branco



# SUBTLE CONTINUOUS

Gloss Type: Shiny Matt  
Color: Branco

Homogeneous finish, without  
stucco effect (No cloudy effect)



# SUBTLE CONTINUOUS

Gloss Type: Matt  
Color: Perla

Homogeneous finish, without  
stucco effect (No cloudy effect)





# SUBTLE CONTINUOUS

Gloss Type: Shiny Matt  
Color: Perla

Homogeneous finish, without  
stucco effect (No cloudy effect)



# SUBTLE CONTINUOUS

Homogeneous finish, without  
stucco effect (No cloudy effect)

Gloss Type: Shiny Matt  
Color: Cream







## COARSE

Gloss Type: Matt  
Color: Latte

Coarse finish is characterized by its hardness. Excellent performance in high traffic areas (shopping malls, public buildings, workplaces or residential spaces, whether indoors or outdoors.



## COARSE

Gloss Type: Matt

Coarse finish is characterized by its hardness. Excellent performance in high traffic areas (shopping malls, public buildings, workplaces or residential spaces, whether indoors or outdoors.



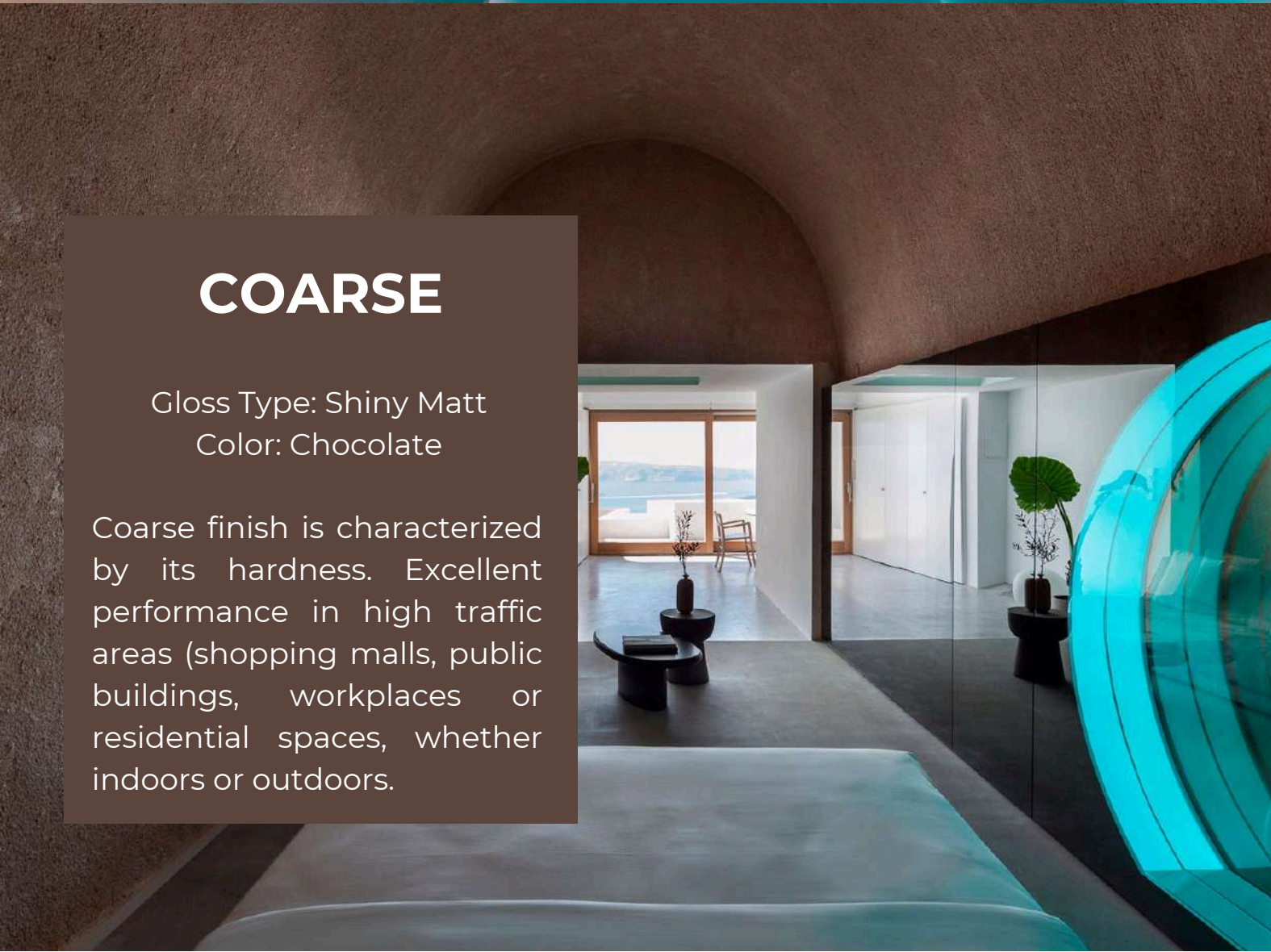




## COARSE

Gloss Type: Shiny Matt  
Color: Golden Sand

Coarse finish is characterized by its hardness. Excellent performance in high traffic areas (shopping malls, public buildings, workplaces or residential spaces, whether indoors or outdoors.



## COARSE

Gloss Type: Shiny Matt  
Color: Chocolate

Coarse finish is characterized by its hardness. Excellent performance in high traffic areas (shopping malls, public buildings, workplaces or residential spaces, whether indoors or outdoors.





# STUCCO CLOUDY

Gloss Type: Matt  
Color: Black (Floor)  
Color: Terra & Cream (Wall)

Stucco effect (cloudy effect). The intensity of the stucco can be enhanced or attenuated during application, thus creating an elegant handcrafted profile that makes each project unique.



# STUCCO CLOUDY

Gloss Type: Matt  
Color: Bone & Perla (mix)

Stucco effect (cloudy effect). The intensity of the stucco can be enhanced or attenuated during application, thus creating an elegant handcrafted profile that makes each project unique.



# STUCCO CLOUDY

Gloss Type: Matt  
Color: Xenon Grey

Stucco effect (cloudy effect). The intensity of the stucco can be enhanced or attenuated during application, thus creating an elegant handcrafted profile that makes each project unique.



# STUCCO CLOUDY

Stucco effect (cloudy effect). The intensity of the stucco can be enhanced or attenuated during application, thus creating an elegant handcrafted profile that makes each project unique.

Gloss Type: Shiny Matt.      Color: Mojave



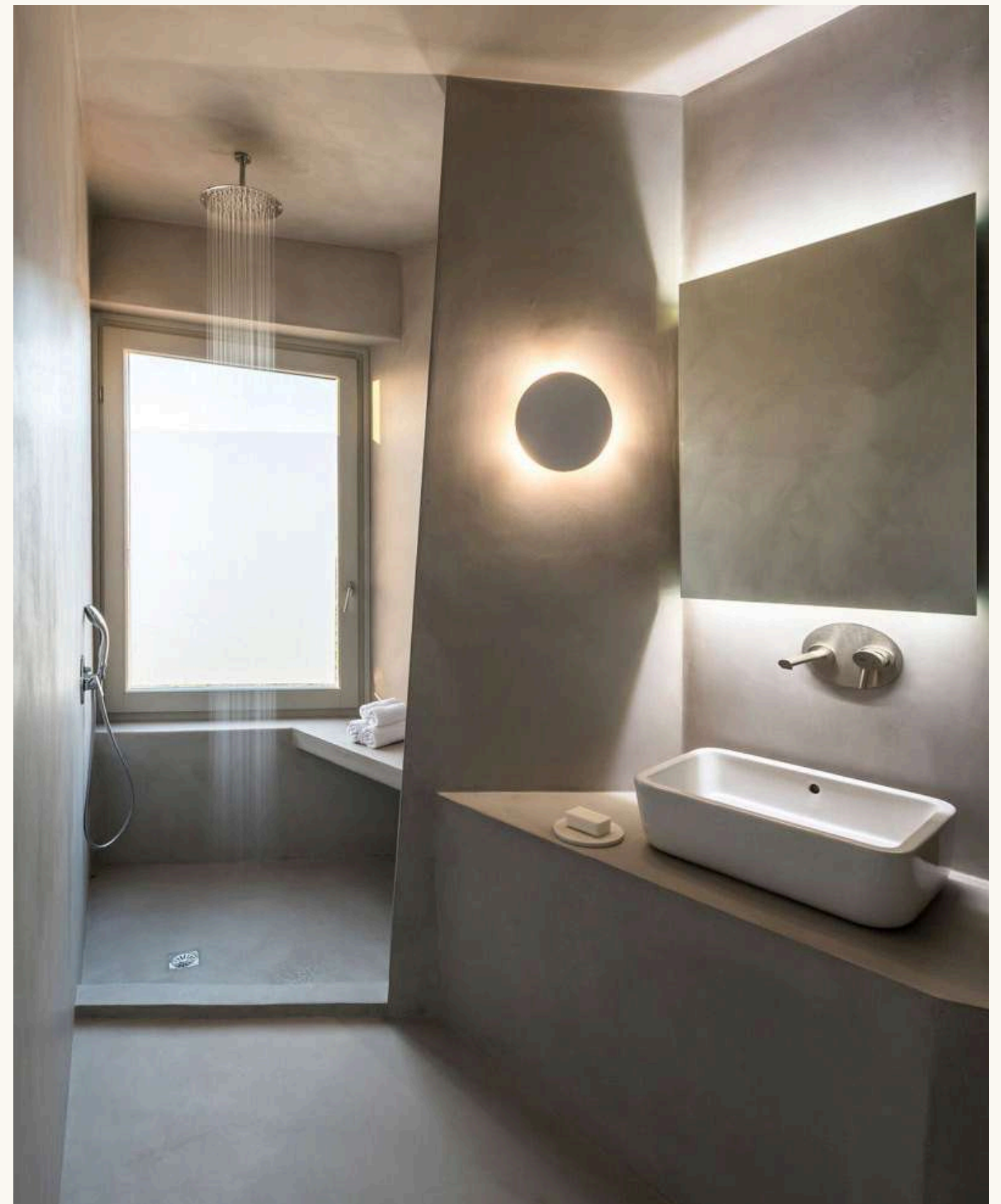




## STUCCO CLOUDY

Gloss Type: Shiny Matt  
Color: Xenon Grey & Perla

Stucco effect (cloudy effect). The intensity of the stucco can be enhanced or attenuated during application, thus creating an elegant handcrafted profile that makes each project unique.



## STUCCO CLOUDY

Gloss Type: Shiny Matt  
Color: Coffee

Stucco effect (cloudy effect). The intensity of the stucco can be enhanced or attenuated during application, thus creating an elegant handcrafted profile that makes each project unique.



# STUCCO CLOUDY

Gloss Type: Shiny Matt  
Color: Xenon Grey & Perla (mix)

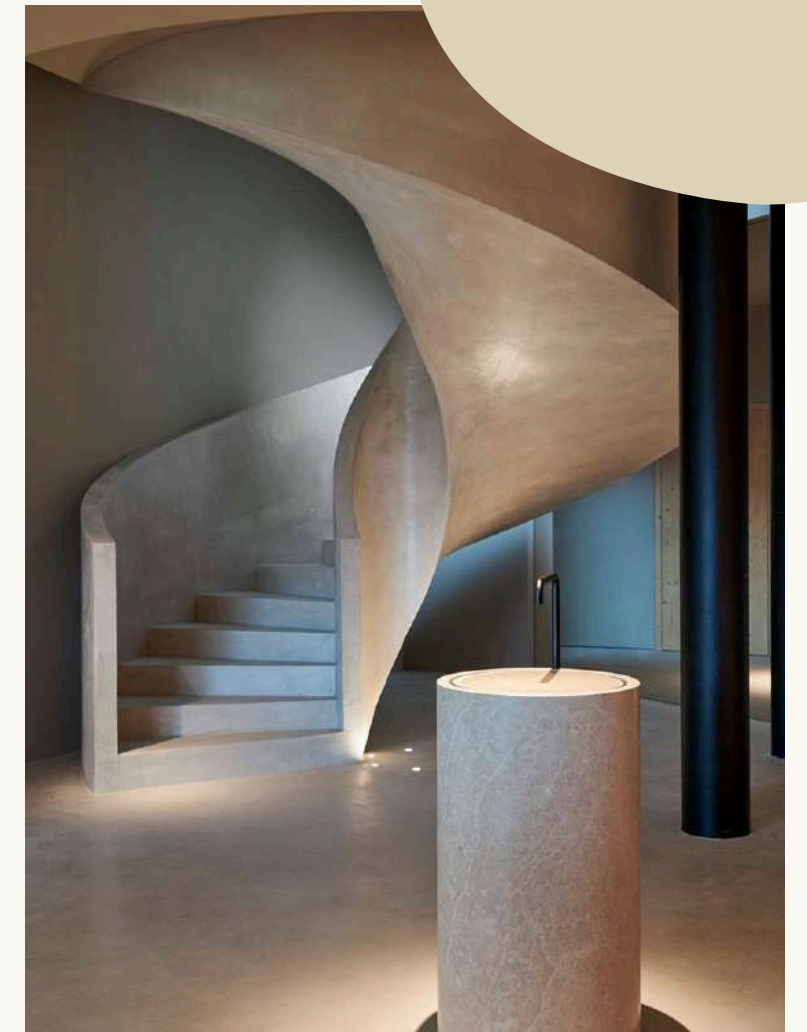
Stucco (cloudy) effect, the intensity of the stucco can be enhanced or attenuated during application, thus creating an elegant handcrafted profile that makes each project unique.



# STUCCO CLOUDY

Gloss Type: Shiny Matt  
Color: Fossile & Latte

Stucco effect (cloudy effect). The intensity of the stucco can be enhanced or attenuated during application, thus creating an elegant handcrafted profile that makes each project unique.





# STRONG STUCCO BURNT DARK

Gloss Type: Matt  
Color: Xenon Grey & Hakuba (mix)

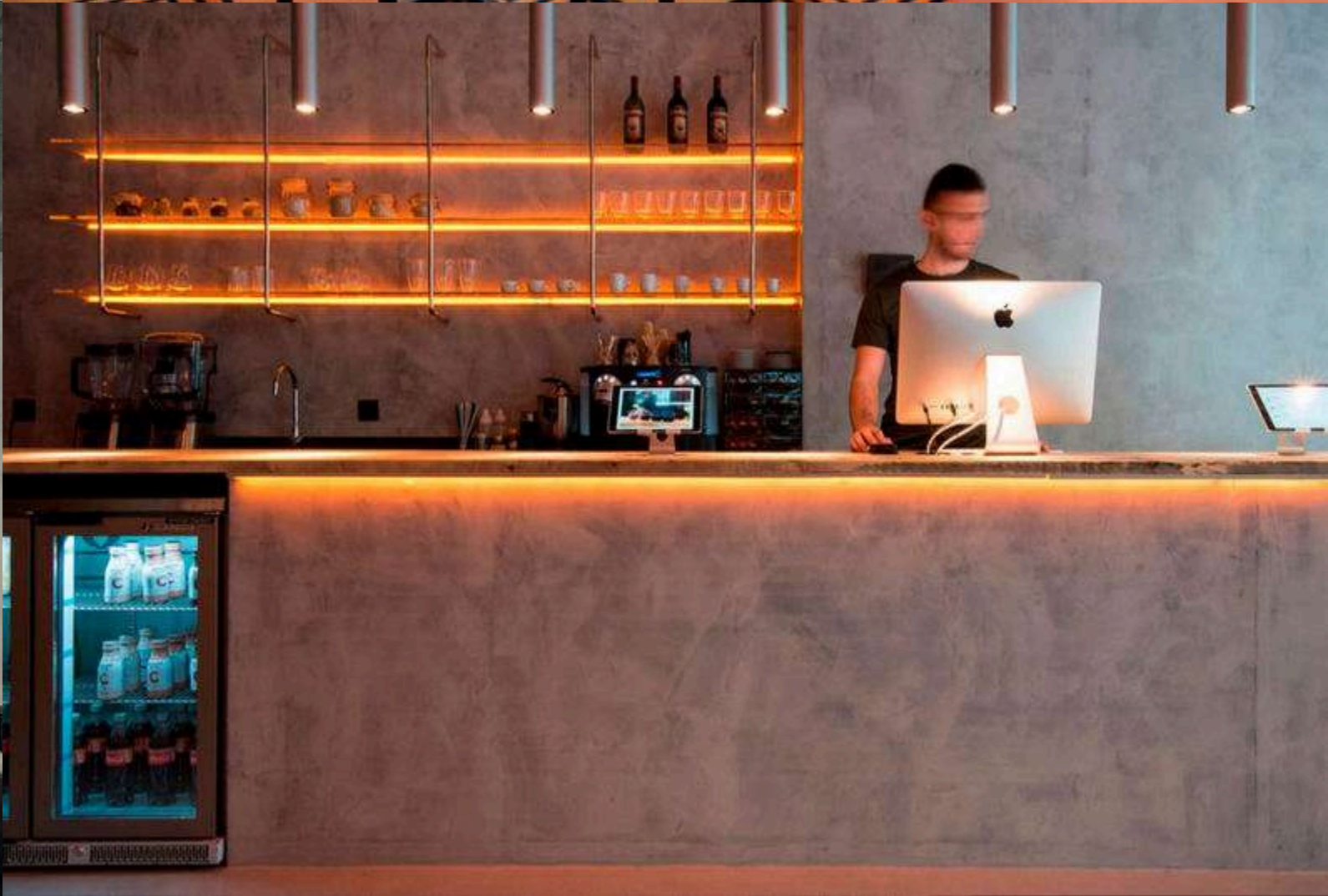
Stucco effect with “Burnt Dark”. The intensity of the stucco can be enhanced or attenuated during application, thus creating an elegant handcrafted profile that makes each project unique.



# STRONG STUCCO BURNT DARK

Gloss Type: Matt  
Color: Xenon Grey & Hakuba (mix)

Stucco effect with “Burnt Dark”. The intensity of the stucco can be enhanced or attenuated during application, thus creating an elegant handcrafted profile that makes each project unique.





**kilnher** group®

C/ Llanterners 44, Pol. Ind. La Figuera  
46970 Alacuás, Valencia SPAIN  
+ 34 96 150 50 24 | [info@cemher.com](mailto:info@cemher.com) | [www.cemher.com](http://www.cemher.com)

**Jointless Works Limited**  
**無縫工藝有限公司**

Factory B1, 5/F, Shui Sum industrial Building  
8-10 Kwai Sau Road, Kwai Chung, N.T., Hong Kong  
m: + 852 9381 3356 | t: + 852 3421 1312  
ig: [jointlessworks](https://www.instagram.com/jointlessworks) | e: [info@jointlessworks.com](mailto:info@jointlessworks.com) | w: [www.jointlessworks.com](http://www.jointlessworks.com)